



KALU LI HE JOA

Interior Design Portfolio

TABLE OF CONTENTS

4



12



20



MAKERSPACE FOR STEAM LEARNING

Transfer High School Design

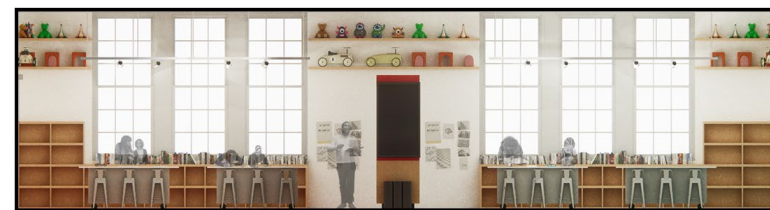
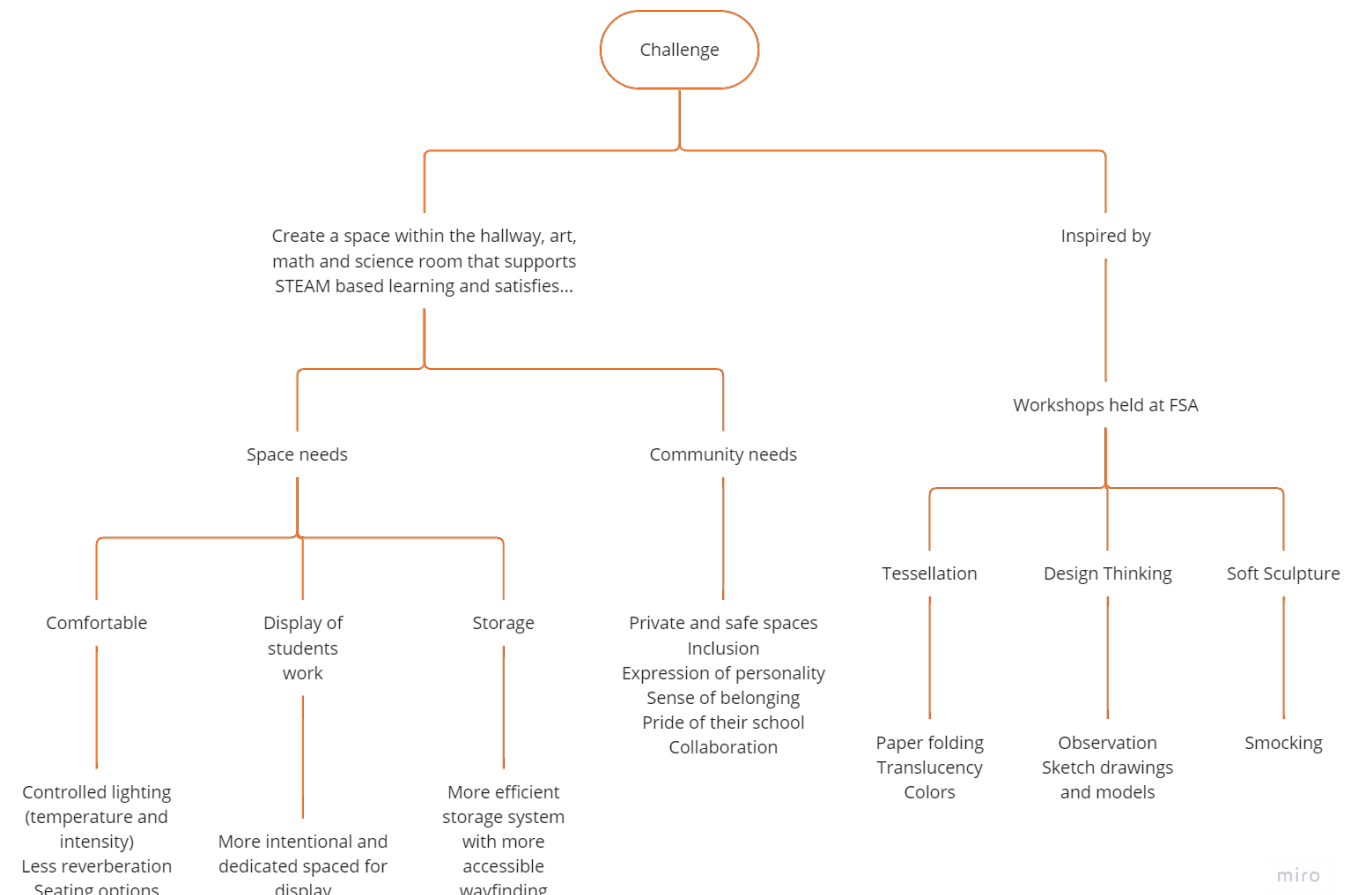
“Makerspace for STEAM learning” aims to design a learning environment that supports the new curriculum at Forsyth Satellite Academy, both in space and community. By creating an open floor plan, the boundaries between each discipline are eliminated to foster transdisciplinary education and collaboration. Through the use of resilient materials across all planes, such as homasote and self-healing surfaces, students have the freedom to be as creative and bold as they want and make anywhere a space for learning and making. Color as my main concept uses red, blue, and yellow to represent the existing art, math, and science rooms respectively. The space is a gradient of colors where the shared space between these three rooms is a bomb of colors resulting from the merging of these disciplines, each represented by a primary color.

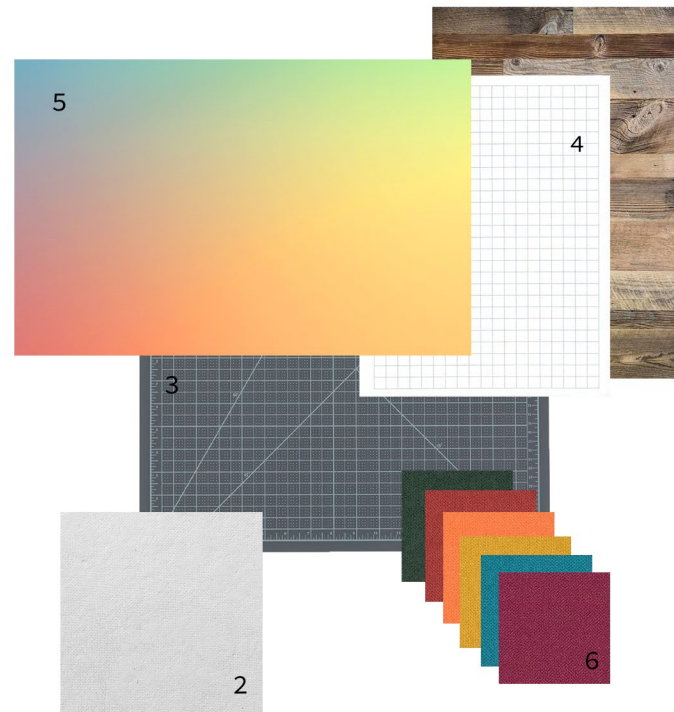


198 Forsyth St, New York, NY 10002

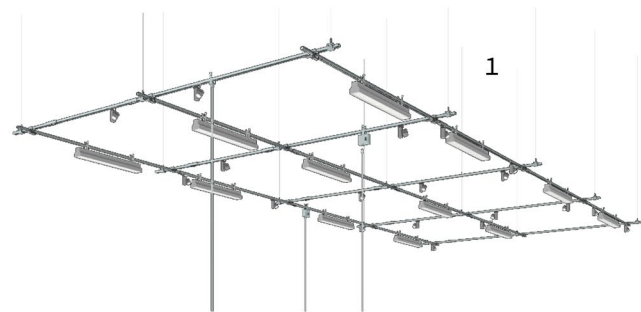


Forsyth Satellite Academy. Site. 2th floor of FSA.





1. Reclaimed wood
2. Homasote
3. Self-healing cutting surface
4. Grid dry erase whiteboard surface
5. Linoleum floor
6. Resilient textile by Maharam



1. Ceiling grid system by busSTRUT
2. Cushioned modular seatings
3. Workbench with soft partitions and built-in storage
4. Makerspace workbench by CEF
5. Reclaimed wood floating shelf



1. Movable partitions with a dry-erase surface for writing or quick sketching.
2. Workbenches with integrated storage and magnets to attach the stools for easy clean-up and transport.
3. Floating shelves for display of students' 3D works.



4. Books exchange.
5. Cubbies for storage of students' belongings.
6. Homasote wall finish for pin-ups.
7. Shared workbench that serves as movable partition. It has built-in storage space, casters, peg-boards and smart screens.



8. Ceiling grid system for lighting and display of students' 2D work.
9. Built-in units for display of students' 3D works.
10. Padded and upholstered modular seatings.



Ceiling

Lighting and display grid system

Floating shelves

Furniture

New interior walls + movable partitions

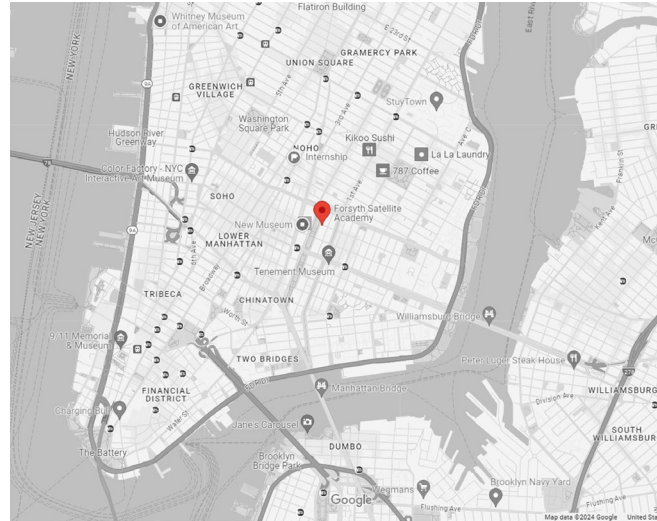
Existing walls and columns + new flooring



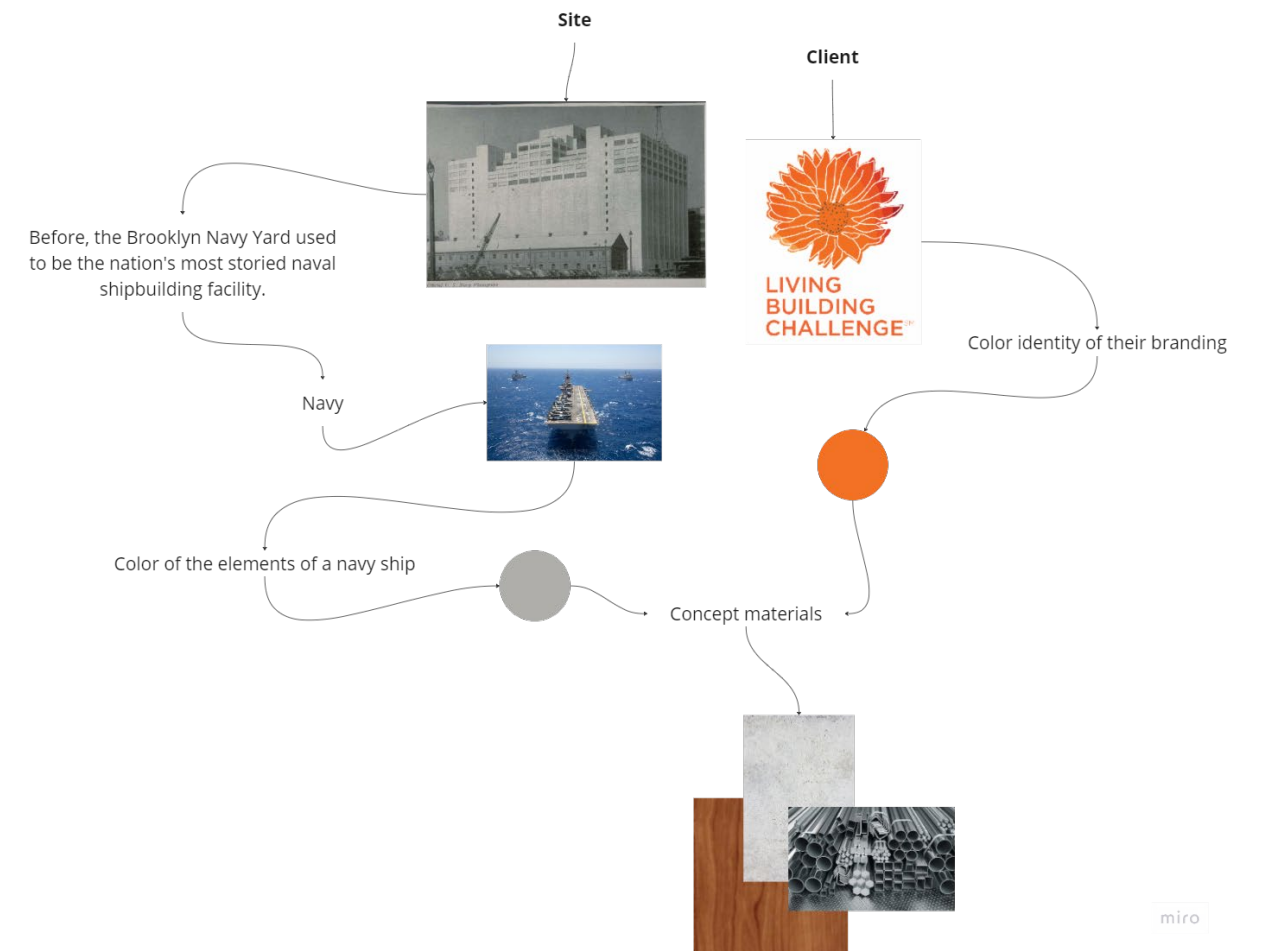
ONE SPACE MANY WORKSTYLES

Office Design

The post-pandemic office environment has proven that employees are happier and more productive if they have flexibility and control in the way they work. This project for the International Living Future Institute seeks to create an office environment where employees can choose workspaces according to their work style, allowing them more flexibility and comfort in the way they produce. Moreover, to tackle the goals of the Living Building Challenge, we are reimagining the office space by bringing exteriority qualities to the interior space, so employees can have a feeling of working outdoors while being under the roof.



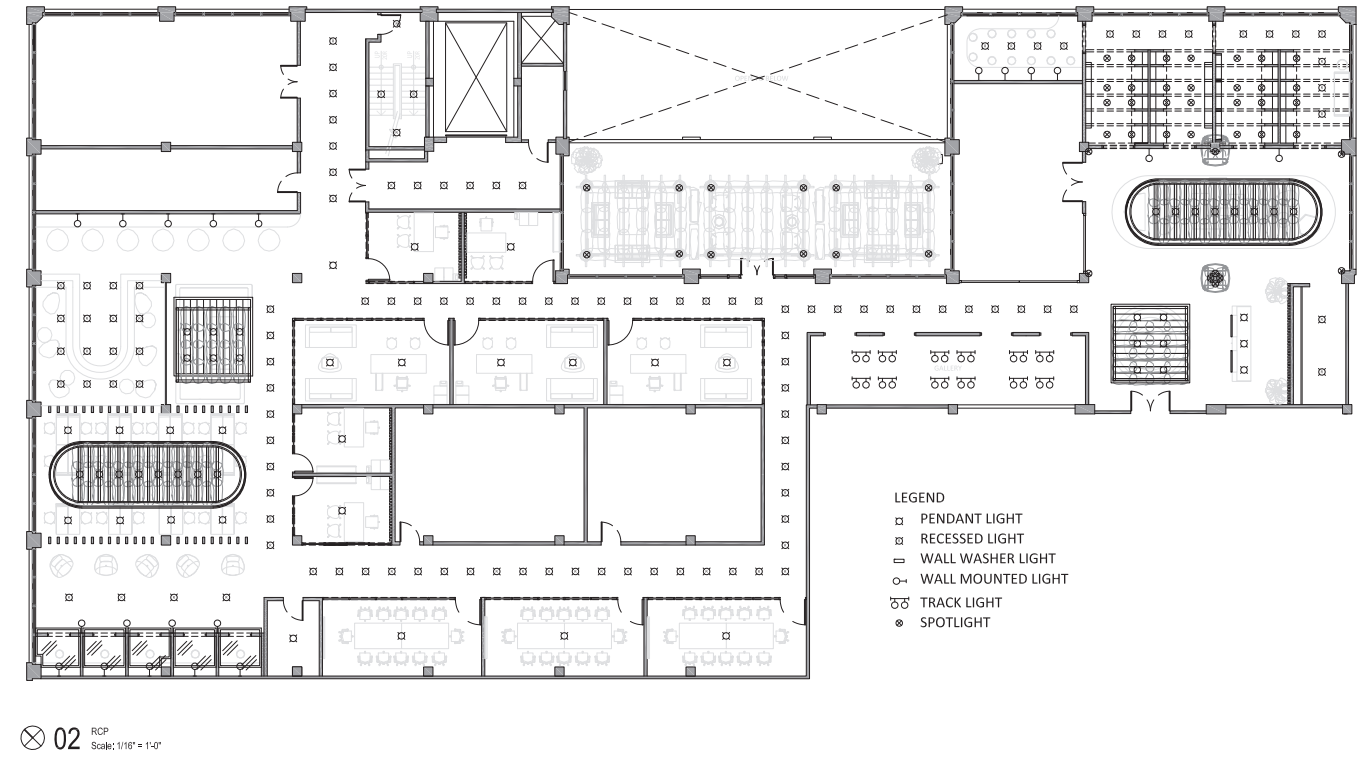
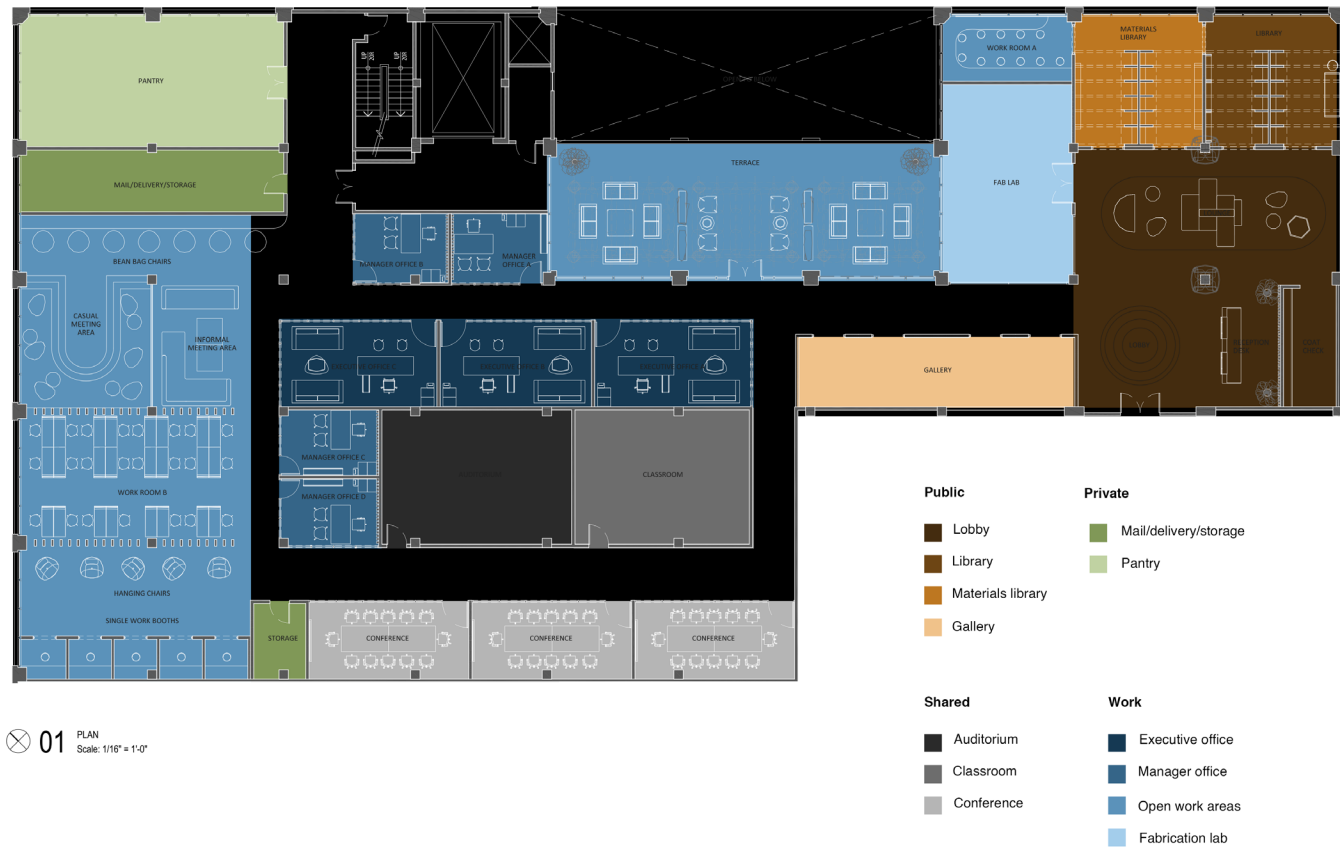
Building 77, 141 Flushing Ave, Brooklyn, NY 11205



Site Analysis. 15th floor of Building 77.



1. Steel mesh
2. Chevron wood
3. Travertine
4. Old brick
5. Stone
6. Rosewood
7. Wavy texture plaster
8. Concrete
9. Limewash
10. Linen curtains
11. Skylight with plants
12. Black frame arch window



Floor plan + space planning diagram



Lobby + library

Open work areas

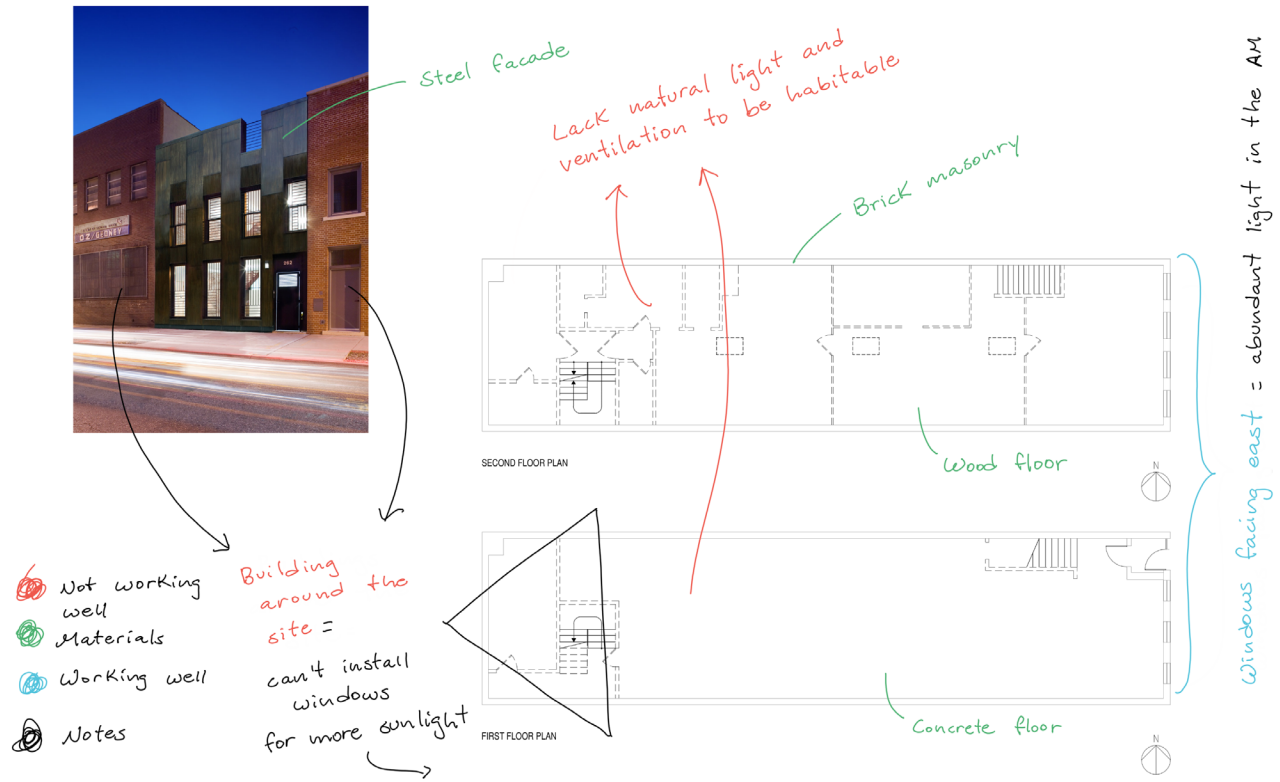




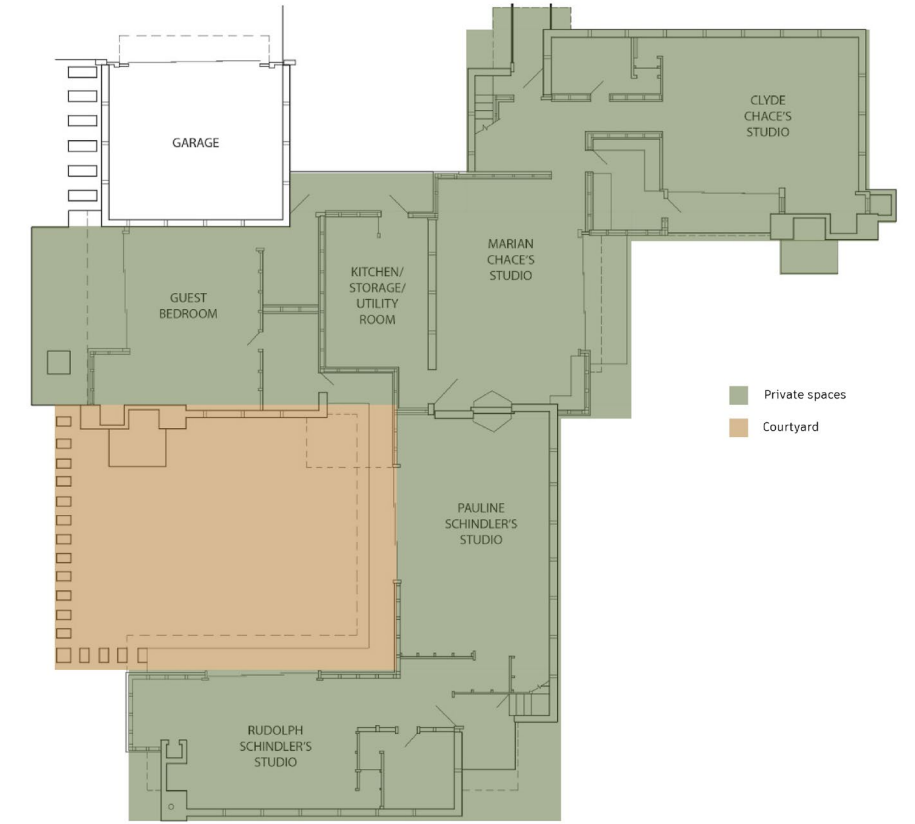
INHABITING THE UNINHABITABLE

Residential Design

This project is a two story dwelling for a family of six: a couple, their two kids and their elder parents who occasionally stays over. Originally a factory, the goal is to transition from a cold, inorganic and manmade space to a place where life can grow and inhabit a previously uninhabitable space.



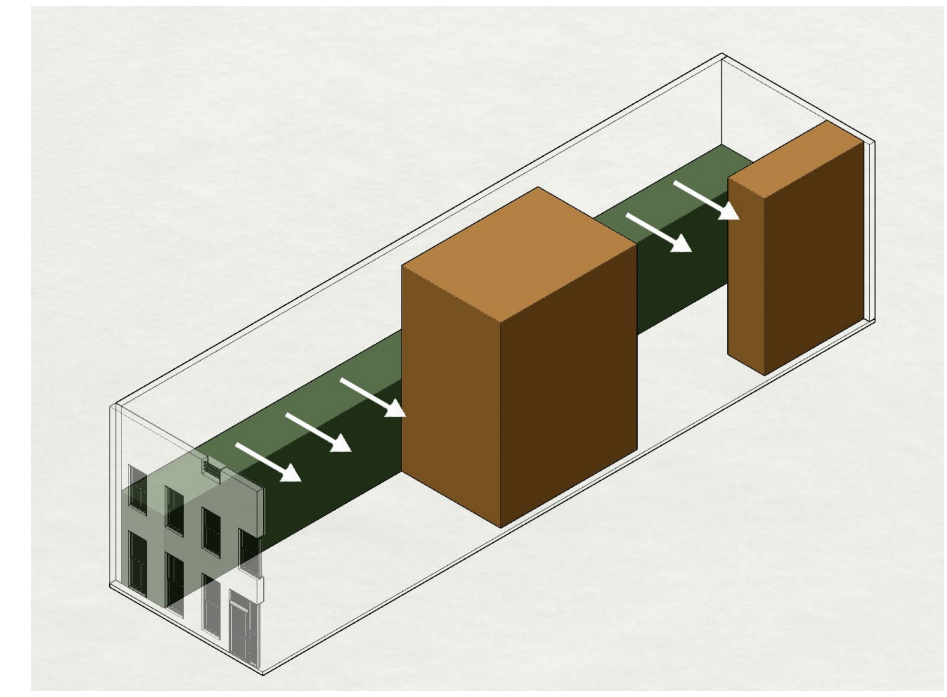
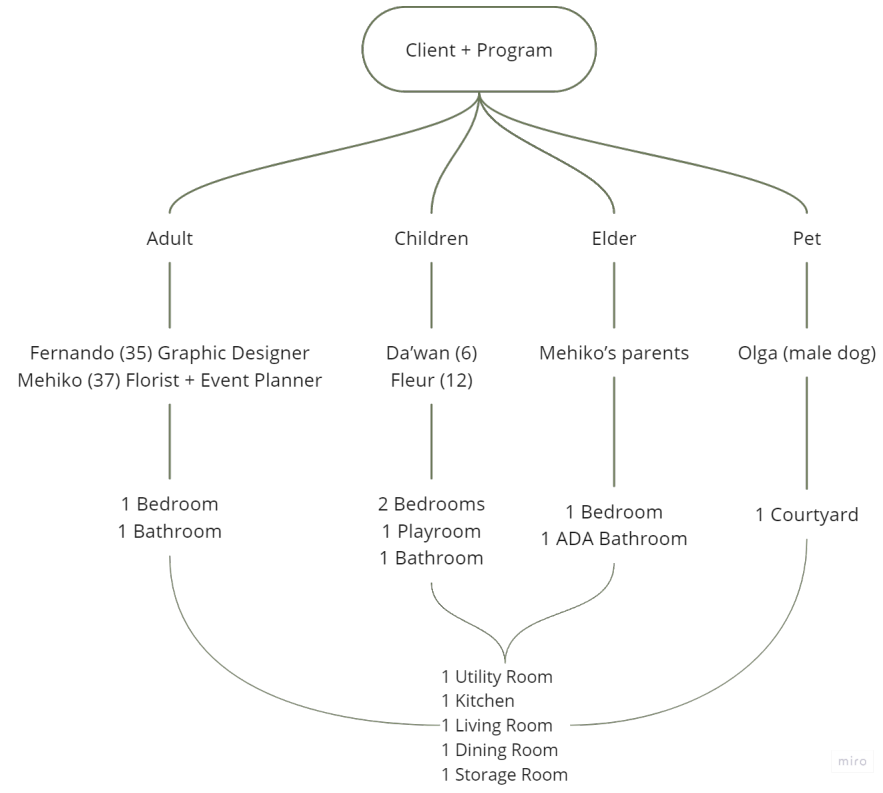
Site Analysis. Existing demolition plan provided by Pratt Institute.



Schindler House. Floor plan by Symon Tiansay.



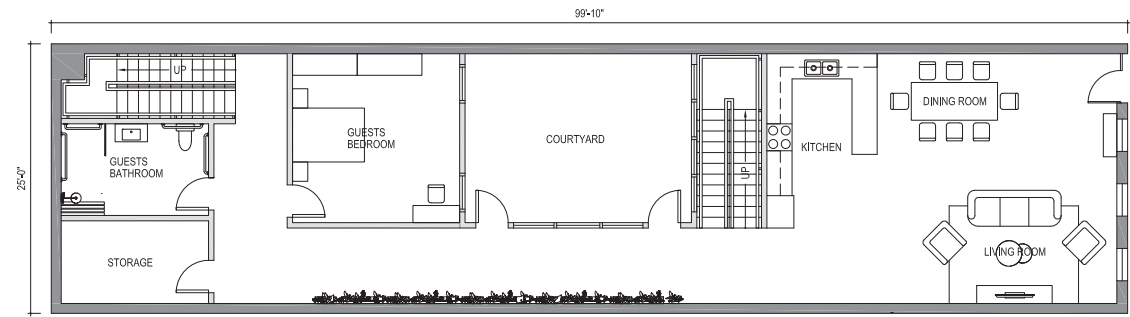
262 Bond St, Boerum Hill, Brooklyn, NY.



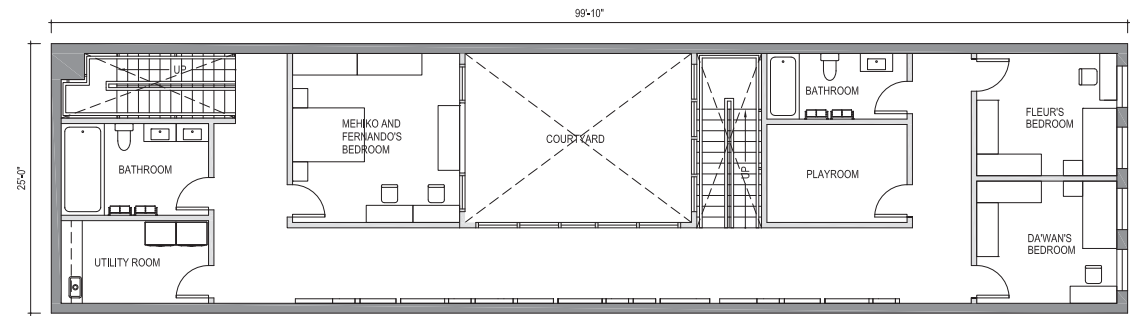
Parti of this project.



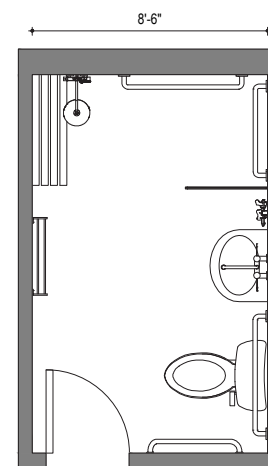
1. Brick
2. Concrete
3. Stone tiles
4. Leather
5. Walnut wood
6. Black steel
7. Concrete pendant light
8. Bronze fixtures



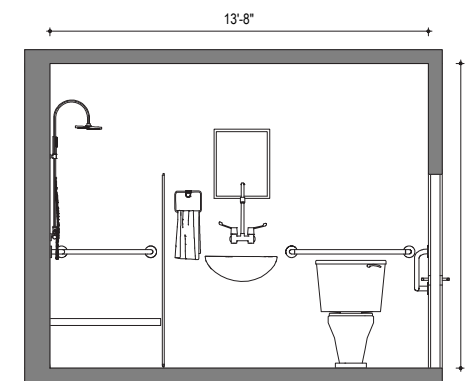
⊕ 01 FIRST FLOOR PLAN
Scale: 1/8" = 1'-0"



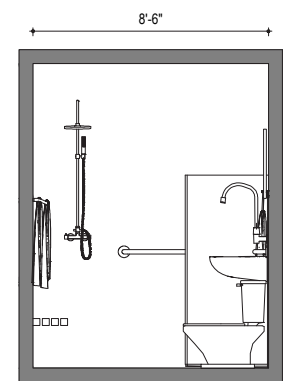
⊕ 02 SECOND FLOOR PLAN
Scale: 1/8" = 1'-0"



⊕ 01 GUEST'S BATHROOM PLAN
Scale: 1/4" = 1'-0"



⊕ 02 GUEST'S BATHROOM LONGITUDINAL SECTION
Scale: 1/4" = 1'-0"



⊕ 03 GUEST'S BATHROOM TRANSVERSAL SECTION
Scale: 1/4" = 1'-0"

